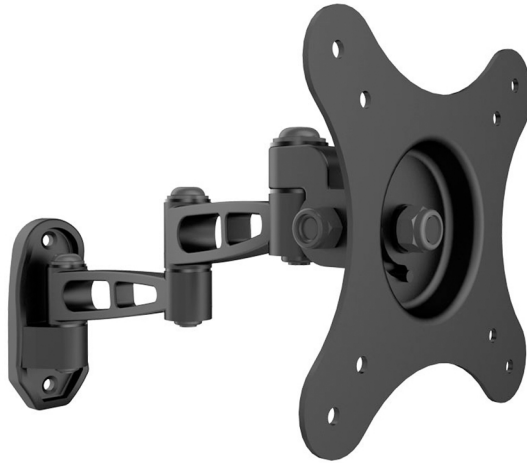


# Full motion Articulating TV Wall Mount

HTV-100



## DESCRIPTION:

Heinrich's Wall mounted display bracket with retractable arm. The pivot and tilt mount holds most 10"-24" LED, LCD flat panel TVs up to 30lbs. The wall mount offers smooth adjustment with 90° swivel and tilt function. Provides VESA 75\*75, 100\*100mm

## SPECIFICATION:

Model	HTV-100
Description	Articulating Wall Mount
TV Size	10" - 24"
Load capacity	30lbs
Material	SPCC
Swivel Range	90 degree
Vesa Pattern	75 x 75mm (Min) , 100x100 (Max)
Tilt Range	-30~+30 degree



**Disclaimer:** As per our company policy one of the constant product improvements the right is there for reserved to modify the product specification without prior notice and the picture shown in the datasheet is a design base, the actual picture may vary.